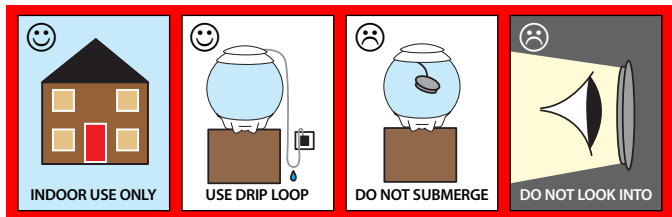
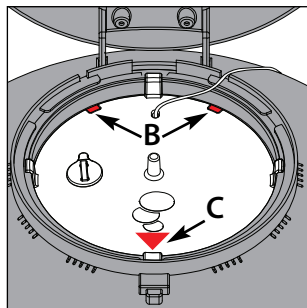
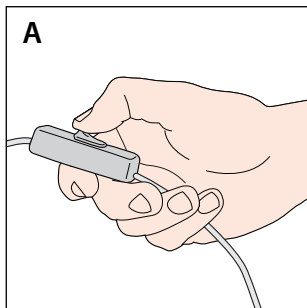


biOrb Standard LED and Moonlight Lighting



Standard LED Light

The biOrb HALO Standard LED light has two super bright LEDs fitted to a separate light unit that sits in the top of the aquarium. The light is operated via an on/off switch in the cable (A) and can be completely removed for maintenance and cleaning. If you want to add a heater to your aquarium the light unit has two removable sections (B) that can be snapped out to accommodate the heater cable. **Note: when fitting the light, ensure that the tabs are correctly orientated as shown (C) or the lid may not close correctly.**



LED Moonlight

The biOrb HALO Moonlight has LED lights built into the underside of the outer lid, away from moisture, limiting the need for any maintenance. The long life LEDs typically last for over 50,000 hours and should never need replacing.

Ensure the lights are plugged in (A) and switched on (B). The lights can be operated in one of three modes which are selected by pressing the button hidden under the lower rim on the outside of the lid (C).

The three modes are Daylight, Moonlight or Automatic Sensor. **Note: If you wish to use the Automatic Sensor you must first set the ambient light levels at which you want the LEDs to change from day to night. Please see the section on Setting the sensor.**

Selecting a mode

In the start position (white light)

1. Press once for constant moonlight (blue)
2. Press again and the white light will flash 3 times indicating the light sensor is activated (see instructions for setting the sensor).
3. Press again to return to the start position (white light).

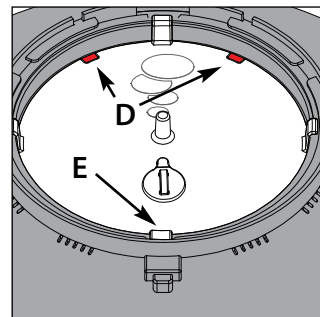
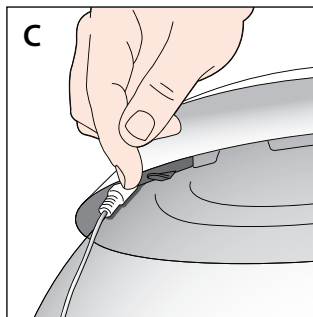
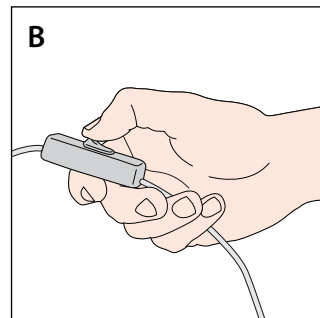
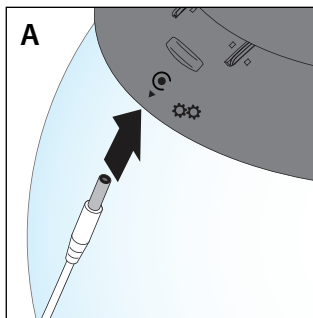
Setting the sensor

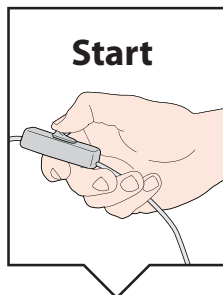
If you wish the lights to automatically switch to a calming moonlight effect at night, a programmable sensor allows you to decide how dark the room gets before switching over.

1. Wait until the room has reached the desired level of light ie. dusk.
2. Press the light button twice for constant moonlight.
3. Press and hold the light button for 3 seconds, the moonlight will flash 3 times to indicate the sensor is now set to switch your LEDs to moonlight when the room reaches this level of light.

The light can be turned off via the inline switch and will return to the previous settings when turned on. If you want to add a heater to your aquarium the evaporation lid has two removable sections (D) that can be snapped out to accommodate the heater cable.

Note: when fitting the evaporation lid or standard light, ensure that the frontmost tab is aligned with the magnetic catch as shown (E) or the top may not close correctly.

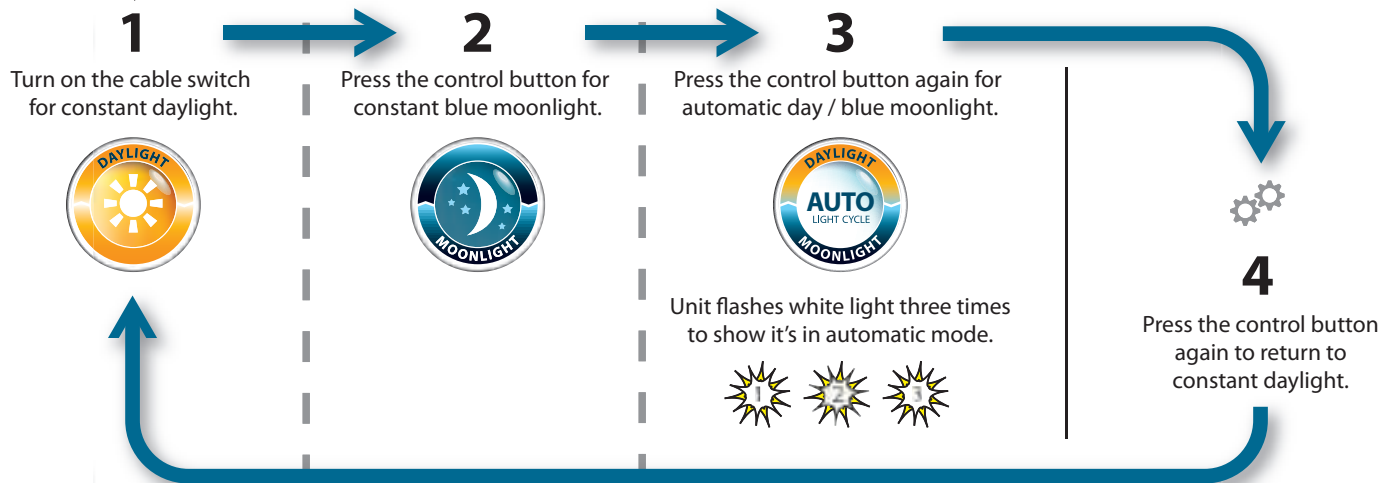




Start



The control button is at the back of your biOrb HALO below this icon and next to the power cable socket.



Daylight not coming on in automatic mode? Here's how you adjust it.

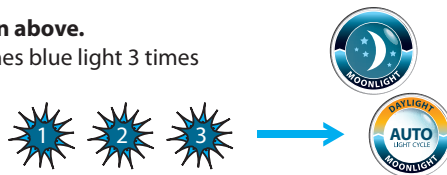
Your biOrb has a built-in light sensor which controls when it switches over to the blue moonlight. This sensor is factory pre-set for dusk and is suitable for most homes. If your room is darker than the factory pre-set the white light will not operate. The sensor can be re-programmed allowing you to decide how dark your room gets before switching over to the blue moonlight.

To re-program your sensor enter the constant blue moonlight mode 2 as shown above.

At the desired room light level, press and hold the control button until the unit flashes blue light 3 times to show it's been re-programmed. Release the button. Your biOrb is now re-programmed and will immediately go into automatic day / moonlight mode.

Note. After setting, you may find that your biOrb HALO briefly returns to white light.

Please wait for your room to darken and the moonlight will come on.



Please note

You can re-program your moonlight sensor as often as you like by following this method. Once re-programmed, it cannot be returned to the original factory settings.