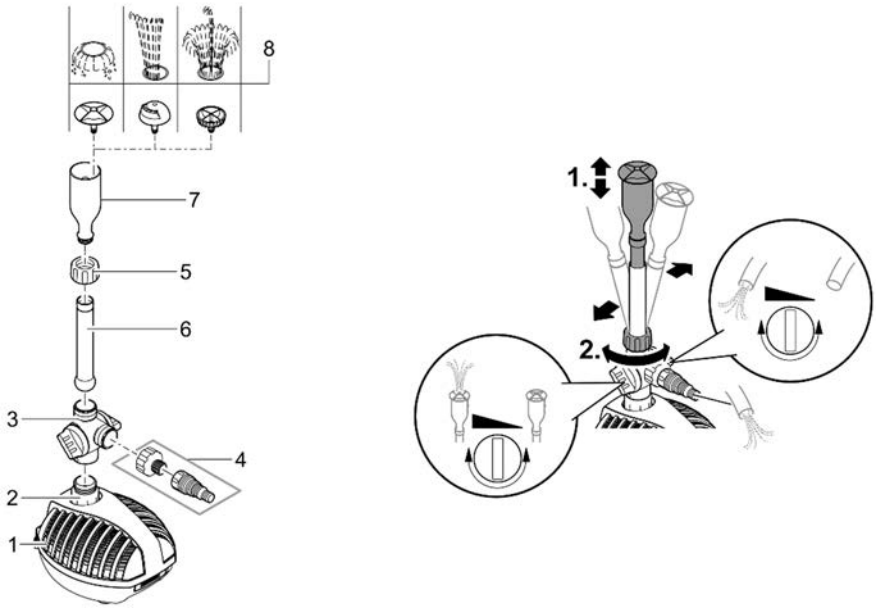




## Aquarius Fountain Set Classic

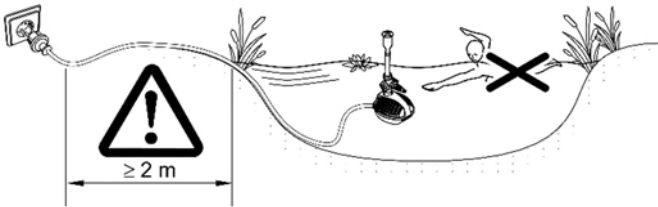
750, 1000, 2000, 3000, 4000

A



ARS0055

B



ARS0039

**⚠ WARNING**

- ▶ Disconnect all electrical devices in the water from the power supply before reaching into the water. Otherwise there is a risk of severe injuries or death by electrocution.
  - ▶ Only operate the unit if no persons are in the water.
  - ▶ This unit can be used by children aged 8 and above and by persons with reduced physical, sensory or mental capabilities or lack of experience and knowledge if they are supervised or have been instructed on how to use the unit in a safe way and they understand the hazards involved. Do not allow children to play with the unit. Only allow children to carry out cleaning and user maintenance under supervision.
-

## Safety information

### Electrical connection

- Only connect the unit if the electrical data of the unit and the power supply match.
- Only plug the unit into a correctly installed outlet. Ensure that the outlet is fused for a rated fault current of max. 30 mA by means of a fault current protection device.
- Protect the plug connections from moisture.

### Safe operation

- Do not use the unit, if electrical lines or the housing are damaged.
- A damaged connection cable cannot be replaced. Dispose of the unit.
- The impeller unit in the pump contains a magnet with a strong magnetic field that may affect the operation of pacemakers or implantable cardioverter defibrillators (ICDs). Keep a distance of at least 0.2 m between the implant and the magnet.
- Do not carry or pull the unit by its power cable.
- Route lines in such a way that they are protected from damage and do not present a tripping hazard.
- Should problems occur, please contact the authorised customer service or OASE.

## Product Description

### Overview

A

- |   |  |
|---|--|
| 1 | Filter housing with filter pump  |
| 2 | Transition piece, fastens the filter pump to the filter cover              |
| 3 | Branch valve with flow-rate regulators                                     |
| 4 | Stepped hose adapter 13/19/25 mm for connection of a rivulet or waterspout |
| 5 | Union nut for fastening the nozzle pipe on the branch valve                |
| 6 | Nozzle pipe  |
| 7 | Nozzle mount   |
| 8 | Nozzle inserts (Vulkan, Lava, Magma) for different water patterns          |

## Intended use

Only use the product described in this manual as follows:

- Pumping of normal water for creating fountains.
- Operate in accordance with instructions.

The following restrictions apply to the unit:

- Do not use in swimming ponds.
- Never use the unit with fluids other than water.
- Never run the unit without water.
- Do not use for commercial or industrial purposes.

## Symbols on the unit

**IP68**



The unit is dust-tight and water-tight down to 2 m.



Remove the unit in the event of freezing temperatures.



Danger for persons with pacemakers. The unit contains a strong magnet.



Do not dispose of the unit with the normal household waste.



Read the operating instructions.

## Installing the pump

### WARNING

Death or serious injuries from hazardous electrical voltage due to operation of this unit in a swimming pond.

- ▶ Never operate the unit in a swimming pond.

B

- Ensure that the connection to the power supply is at least 2 m from the pond.
- Place the pump horizontally on a stable, mud-free surface.
- The pump is under water, the nozzle intake emerges from the water.

**TIP!** Thoroughly clean the pond or pool and place the pump approx. 200 mm above the bottom of the pond, so that no muddy water runs through the pump.

- Muddy water will cause the nozzle to clog faster and the impeller unit to become worn prematurely.

## Commissioning/start-up

### NOTE

Never connect the pump to a dimmer. Otherwise the pump will be destroyed.

- **Switching on:** Plug the power plug into the outlet.
  - The unit switches on immediately.
- **Switching off:** Pull the power plug from the outlet.

## Maintenance and cleaning

### NOTE

Never use chemical cleaning agents. These are hazardous to animals, plants and the environment.

- ▶ Only use clear water and a soft brush to clean the unit.

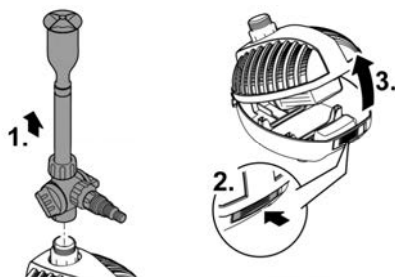
Recommendation regarding cleaning:

- ▶ Clean the unit as required, but at least twice a year.
- ▶ When cleaning the pump, pay particular attention to the impeller unit and the pump housing.

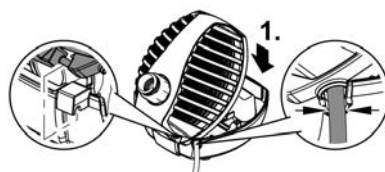
## Opening/closing the housing

Before closing the housing, place the power cable in the recess in the housing to prevent it from being crushed.

### Opening the housing



### Closing the housing



ARS0041

ARS0042

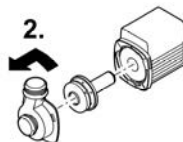
## Cleaning/replacing the impeller unit

- Remove the pump cover or pump housing from the motor housing by turning it counter-clockwise (bayonet catch).
- After removing the impeller unit, clean all parts under running tap water.
- Replace a worn or damaged impeller unit.
- Assemble in the reverse order.



Aquarius  
Fountain Set Classic  
750, 1000

Aquarius  
Fountain Set Classic  
2000 E, 3000 E, 4000 E



ARS0043

## Storage/winter protection

The unit is not frost-proof and has to be removed and put into storage if minus temperatures are expected.

How to correctly store the unit:

- Thoroughly clean the unit, check it for damage and replace any damaged parts.
- Store the pump submerged and in a frost-free environment.

## Malfunction remedy

Malfunction	Possible cause	Remedy
Pump does not run	No mains voltage	Check the mains voltage.
	Impeller unit blocked	Clean the impeller unit
Insufficient delivery rate	Impeller unit running sluggishly	Clean the impeller unit
	Filter housing clogged	Clean the filter housing.
	Pressure loss in the hose too high	<ul style="list-style-type: none"> <li>• Reduce the hose length and connecting pieces to a minimum</li> <li>• Route hose in a straight line</li> </ul>
Unit switches off after a short running period	Water temperature too high	Observe the maximum water temperature of +35 C
	Unit is overloaded	<ul style="list-style-type: none"> <li>• Remove blockage</li> <li>• The unit will switch on again automatically as soon as it has cooled down.</li> </ul>
The water pattern is uneven or incomplete	Nozzle is blocked	<ul style="list-style-type: none"> <li>• Clean nozzle</li> </ul>

## Technical data

### Unit data

Aquarius Fountain Set Eco		750	1000	2000	3000	4000
Rated voltage	AC V	230	230	230	230	230
Mains frequency	Hz	50	50	50	50	50
Power consumption	W	9	11	18	26	42
Protection type		IP 68	IP 68	IP 68	IP 68	IP 68
Max. pump capacity	l/h	720	1000	2100	3000	4000
Max. water column	m	1.1	1.3	2.1	2.5	2.9
Max. pump immersion depth	m	2	2	2	2	2
Water feature connection		G1	G1	G1	G1	G1
Stepped hose adapter	mm	13/19/25	13/19/25	13/19/25	13/19/25	13/19/25
Dimensions	Length	mm	205	205	205	205
	Width	mm	180	180	180	180
	Height	mm	140	140	140	140
Weight	kg	1.8	1.8	2.0	2.2	2.7



## Permissible water values

		Fresh water, pond water
pH value		6.8 ... 8.5
Hardness	°dH	8 ... 15
Free chlorine	mg/l	<0.3
Chloride content	mg/l	<250
Salt content	%	<0.4
Overall dry residue	mg/l	<50
Temperature	°C	+4 ... +35

## Wear parts

- Impeller unit

## Spare parts



The use of original parts from OASE ensures continued safe and reliable operation of the unit.

Please visit our website for spare parts drawings and spare parts.

[www.oase.com/ersatzteile](http://www.oase.com/ersatzteile)

## Disposal

### NOTE



Do not dispose of this unit with household waste.

- ▶ Dispose of the unit by using the return system provided for this purpose.
- ▶ Render the unit unusable by cutting the cables.

OASE GmbH  
Postfach 2069 • 48469 Hörstel  
Tecklenburger Straße 161 • 48477 Hörstel  
Germany

[www.oase.com](http://www.oase.com)  
[info@oase.com](mailto:info@oase.com)  
Hotline: +49 5454 93 39 49 20