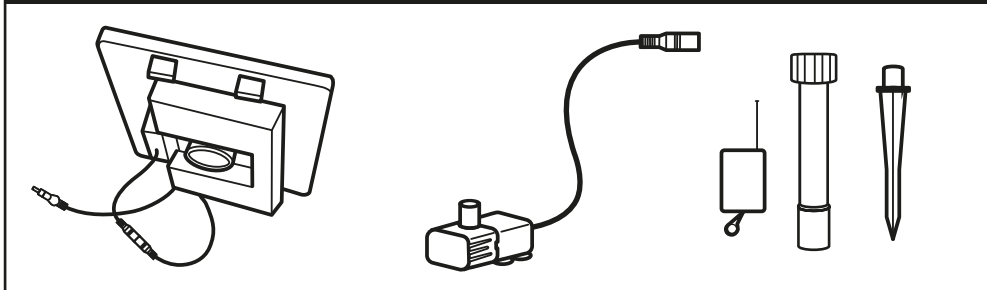


SOLAR POWERED

Pump, Panel and Remote Kit (2150PKD-G)



CONTENTS

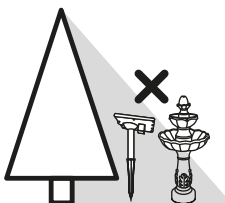
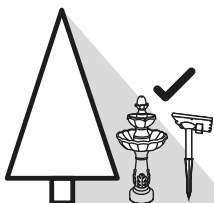


INSTALLATION

Ensure connectors are water tight.

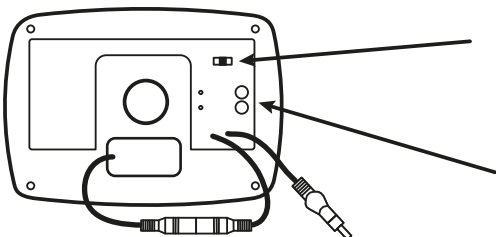
1. Run pump cable through the water feature.
2. Fit the tube from the finial to the pump.
3. Screw the post to bottom of the solar panel.
4. Fit spike to the post.
5. Connect panel to the pump

POSITION



GB Position the solar panel to receive the maximum amount of direct sunlight

OPERATION



BATTERY OFF SOLAR



ON 4H



24H TIMER



GB Panel is supplied with the switch in the OFF position to protect the internal rechargeable battery. The switch can be used to select between BATTERY and SOLAR modes or to switch the unit OFF.

SOLAR MODE

BATTERY OFF SOLAR



GB When switched to SOLAR mode the pump will only work when the solar panel is receiving direct sunlight. Performance is directly related to the amount and strength of sunlight received. Remote control will not function and indicator lights will not illuminate when switched to this mode. We recommend this mode if you are at home during the day and want to enjoy your fountain with minimum interaction.

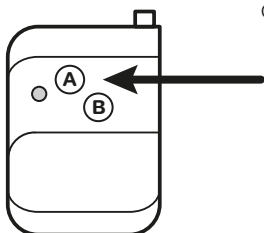
BATTERY MODE

BATTERY OFF SOLAR



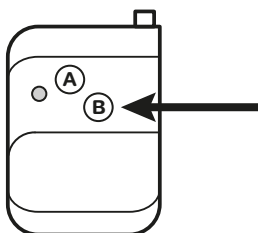
GB When switched to BATTERY mode the solar panel will charge the internal battery so that power is stored for when you want to use it. The pump can now be activated using the remote control or the push button switches on the back of the panel. We recommend that you charge the battery for 2 days before first using the pump to ensure optimum performance; simply leave the solar panel in the sun for 2 days with the switch in the BATTERY or OFF position.

ON 4 HOURS



GB Press button A on the remote control or ON 4H on the back of the solar panel to switch the pump on. Press again and the pump will switch off. The red indicator light on the back of the panel will illuminate and remain on whilst the pump is operating. The red indicator light on the remote control will illuminate when you press the button to confirm a signal has been sent. The pump will automatically switch off after 4 hours to conserve battery power. We recommend this mode if you want total control to switch on and off when required and even operate in the evening when it is dark.

24 HOUR TIMER



GB Press button B on the remote control or 24H TIMER on the back of the solar panel to activate the 24H TIMER. The pump will switch on and work for 4 hours before switching off. On subsequent days the pump will switch on automatically at the same time and run for 4 hours. This timer function will continue until you press button B again. You can reset the on time by simply switching off and then on again at your desired time. The red indicator light on the back of the panel will illuminate and remain on whilst the unit is in timer mode. We recommend this mode if you prefer to have a regular daily cycle.

PERFORMANCE





GB This product is designed primarily to operate in summer months but the battery function will allow it to work in spring/autumn and even winter provided there is strong sunshine. Performance is directly related to the amount and strength of sunlight received.

SOLAR MODE - MODE SOLAR - SOLAR MODE

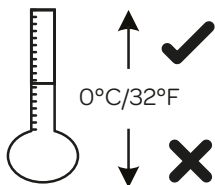


BATTERY MODE - MODE BATTERY - BATTERIE MODUS

GB The battery has capacity for up to 8 hours of operation, 2 cycles of 4 hours. The table below shows how long on average it will take to fully charge from flat. In most cases it will not take this long as there will be charge left in the battery.

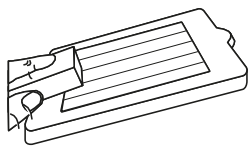
	Spring	Summer	Autumn	Winter
				
To fully charge	3-4 days	2 days	3-4 days	12+ days
Charge per day	3-4 h	5-6 h	3-4 h	0.5-1 h

FROST



GB Frost causes damage, so we recommend that you store the whole fountain inside during cold weather.

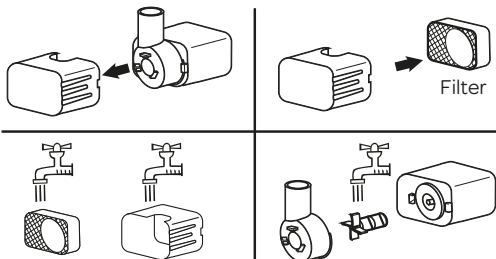
MAINTENANCE



GB Regularly clean the solar panels using water or glass cleaner, in conjunction with a non-abrasive sponge.

PUMP CLEANING

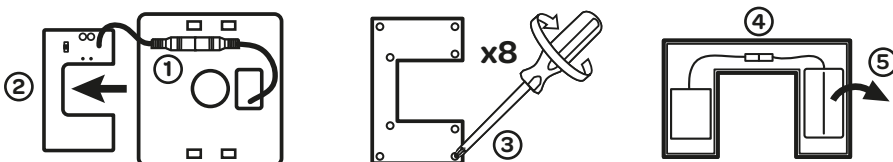
GB Use water or glass cleaner.



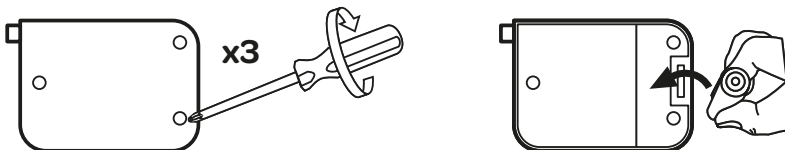
BATTERY

GB Rechargeable battery packs become less efficient with repeated charge and discharge cycles. The capacity of the battery may also reduce over time and you may not achieve the 12 hour operation. If you find that the battery appears less efficient or does not run as long, we first suggest you try to boost charge it. To do this leave off for 3 to 5 sunny days to allow the maximum charge to the battery. We suggest you do this occasionally anyway to help prolong the battery life. If after this boost charge your battery still does not perform to expectations you should seek a replacement from Smart Solar (available via our website www.sguk.com). All our battery packs are covered by a 1 year warranty.

CHANGE BATTERY - CHANGEMENT DE BATTERIE - BATTERIEWECHSEL



GB Unplug the battery connector (1) and slide out the battery case (2). Undo the 8 screws (3) and remove the cover. Disconnect the battery connector (4), replace the battery (5) and reconnect.



GB If your remote control stops working you can replace the internal battery. Remove the 3 screws as shown and replace with the same battery type 23A 12V Battery (A23/MN21)

BATTERY DISPOSAL

GB Dispose of batteries according to local regulations.



PROBLEM SOLVING

- GB
1. Check the fountain is positioned correctly, receiving sunlight and not in shade.
 2. Check water level and ensure the pump is submerged.
 3. Check connections between the pump and panel and battery.
 4. Clean all parts as shown and change water.
 5. Check tubes are connected and bung is securely fitted.
 6. Check battery and boost charge it as described.
 7. If problems persist contact customer services.

1 YEAR WARRANTY

GB Email: uksupport@sguk.com

Tel: +44(0)1443 843306



www.sguk.com