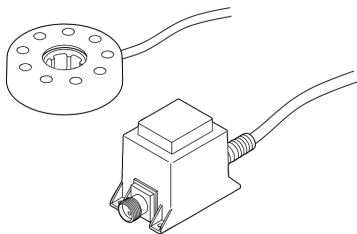


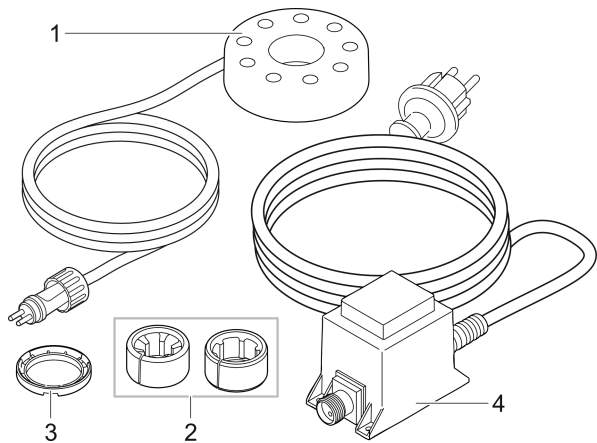


EN Operating instructions



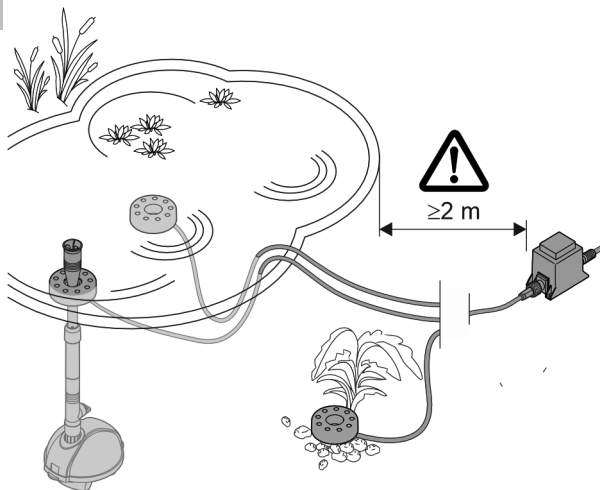


A





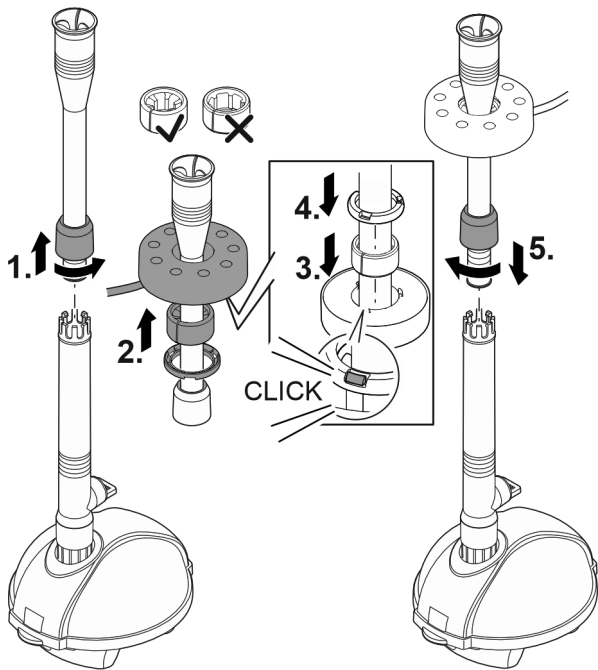
B



PSR0041

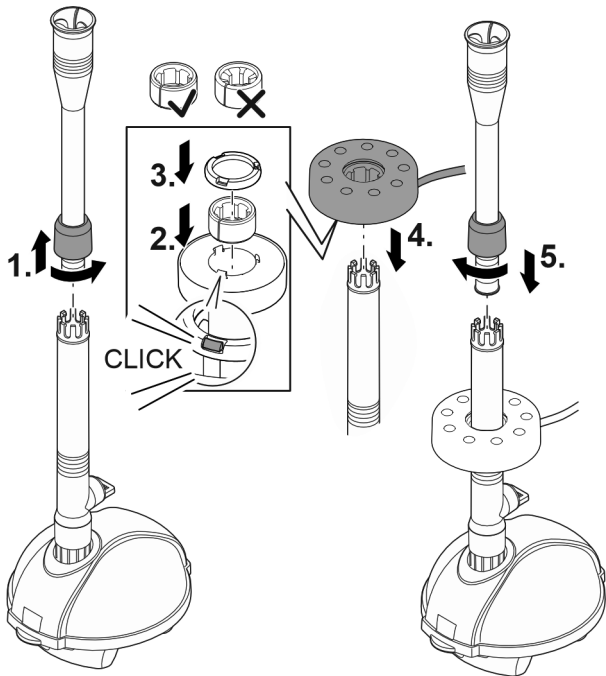


C



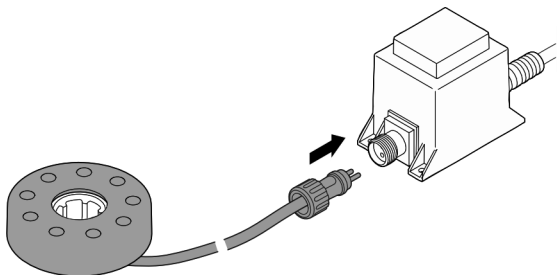


D





E



PSR0042

Original manual. This manual belongs with the unit and must always be passed on together with the unit.

 **WARNING**

- ▶ Disconnect all electrical devices in the water from the power supply before reaching into the water. Otherwise there is a risk of severe injuries or death by electrocution.
 - ▶ This unit can be used by children aged 8 and above and by persons with reduced physical, sensory or mental capabilities or lack of experience and knowledge if they are supervised or have been instructed on how to use the unit in a safe way and they understand the hazards involved. Do not allow children to play with the unit. Only allow children to carry out cleaning and user maintenance under supervision.
-

Safety information

Electrical connection

- Special regulations apply for electrical installation in outdoor spaces. Only a qualified electrician may perform the electrical installation.
 - The qualified electrician has the necessary professional training, knowledge and experience to perform electrical installation in outdoor spaces. The electrician can detect potential dangers and knows how to adhere to regional and national standards, regulations and directives.
 - For your own safety, please consult a qualified electrician.
- Only connect the unit if the electrical data of the unit and the power supply match.
- Only plug the unit into a correctly installed outlet.
- The device is to be supplied through a residual current device (RCD) having a rated residual operating current not exceeding 30 mA.
- Extension cables and power distributors (e.g. outlet strips) must be suitable for outdoor use (splash-proof).
- Protect open plugs and sockets from moisture.

Safe operation

- Only operate the unit with the supplied transformer.
- Do not use the unit, if electrical lines or the housing are damaged.
- The power pack or transformer and plug connections are only protected from rain and splash water, they are not waterproof. Ensure that they are never placed in water.
- The supply cord cannot be replaced. If the cord is damaged, the appliance should be scrapped.
- Do not carry or pull the unit by its power cable.
- Route lines in such a way that they are protected from damage and do not present a tripping hazard.
- Never carry out technical changes to the unit.
- Only carry out work on the unit that is described in this manual.
- Only use original spare parts and accessories.

Intended use

Only use the product described in this manual as follows:

- For use above and under water.
- While adhering to the technical specifications. (→ Technical data)

Product Description

Overview





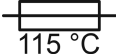



<input type="checkbox"/> A	PondoStar LED Ring Compact
1	LED Ring Compact
2	Adapter for installation on a nozzle extension <ul style="list-style-type: none"> • Adapter ø 16 mm • Adapter ø 22 mm
3	Clamping ring for fastening the adapter on the LED Ring Compact
4	Transformer for power supply

Properties

PondoStar LED Ring Compact is a decorative lighting system for garden areas.

- Suitable for installation on a nozzle extension (for instance PondoVario 750/1000/1500/2500/3500).
- Diverse installation options in gardens or garden ponds.

Description of product-specific symbols

IP68 	The unit is dust-tight and protected against the results of permanent immersion in water to a depth of 2 m.
IP44	The unit is dust-tight and protected against splash water.
	The unit has protection rating II and is protected by double or reinforced insulation.
	The unit has protection rating III. Only operate the unit with safety-low voltage.
	The transformer is a safety transformer supplying safety-low voltage on the secondary side.
	Fusible cut-out, triggered at a device temperature of 115 °C.
LED class 1	Do not look directly into the beam source.
	Do not dispose of the unit with normal household waste.
 	Read the operating instructions.

Installation and connection

B

- Diverse installation options, e.g. in gardens, garden ponds or decorative fountains. Connectors and adapters are not required.
 - Suitable for installation on the nozzle pipe of a fountain pump.
(→ Installation on nozzle extension)
- Position the transformer at least 2 m from the edge of the pond.
- Position the unit in such a way that it does not present a hazard to anyone.

Installation on nozzle extension

C, D

The connector and an adapter are required for fastening the unit on a nozzle extension. The diameter of the nozzle extension determines which adapter is required.

How to proceed:

1. Insert the desired adapter in the LED ring from below and push it all the way into the LED ring.
2. Position the clamping ring and push until the three hooks engage in the clamping ring.
 - The adapter is fastened in place by the clamping ring.

Connect the unit

E

- Connect the connection cable of the LED light ring with the socket on the power pack and hand-tighten the union nut.

Commissioning/start-up

NOTE

The unit will be destroyed if it is operated with a dimmer. It contains sensitive electrical components.

- ▶ Do not connect the unit to a dimmable power supply.

-
- **Switching on:** Plug the power plug into the outlet.
 - The unit switches on immediately.
 - **Switching off:** Pull the power plug from the outlet.

Maintenance and cleaning

If necessary, clean the unit with clear water using a soft brush.

- Protect the plug connection from moisture.

Technical data

Description		PondoStar LED Ring Compact		
Transformer	Primary	Rated voltage	V AC	230
		Mains frequency	Hz	50
		Max. power consumption	VA	3.6
	Secondary	Output voltage	V AC	12
		Output voltage frequency	Hz	50
		Max. power output	W	3
Protection type			IP 44	
Length of power cable		m	2	
Weight		kg	0.45	
LED light ring	Connection voltage		V AC	12
	Max. power consumption		W	1
	Light flux		lm	35
	Colour temperature		K	3000
	LED class			1
	Protection type			IP 68
	Maximum submersion depth		m	2
	Transformer connection cable length		m	8
	Dimensions	Diameter	mm	77
		Height	mm	25
	Weight		kg	0.8

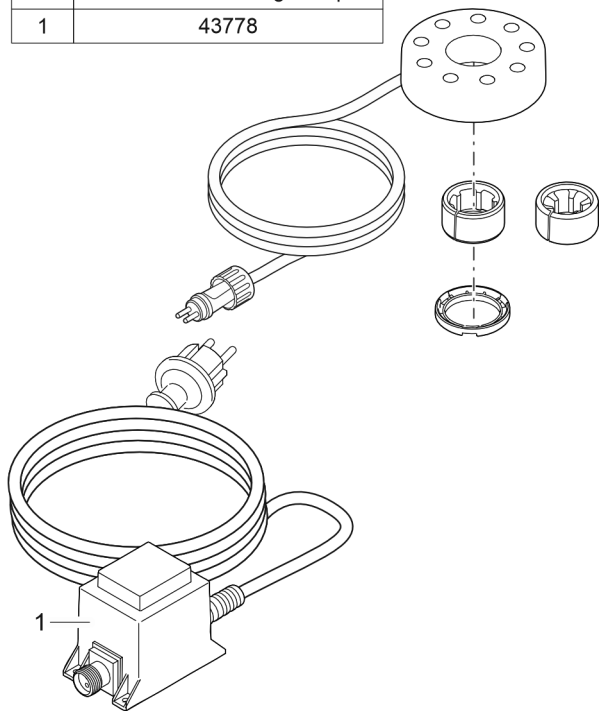
Disposal

NOTE

Do not dispose of this unit with household waste.

- ▶ Dispose of the unit by using the return system provided for this purpose.
- ▶ Should you have questions, please contact your local disposal company. They will give you information on how to correctly dispose of the unit.
- ▶ Render the unit unusable by cutting the cables.

Pos.	PondoStar LED Ring Compact
1	43778



PSR0043

PfG GmbH
Tecklenburger Straße 161
48477 Hörstel | Germany
www.pontec.com

**CE UK
CA**
93817/08-23